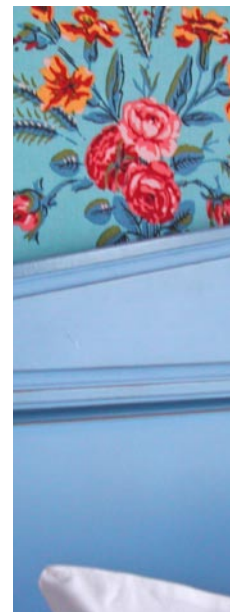
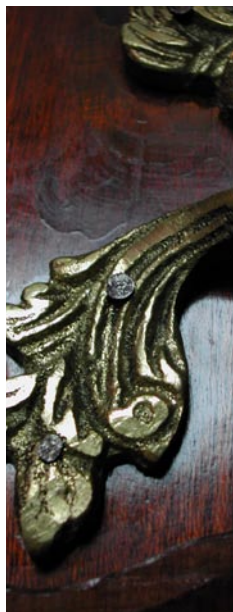


*Paris Left Bank*



# HÔTEL DES GRANDS HOMMES

[reservation@hoteldesgrandshommes.com](mailto:reservation@hoteldesgrandshommes.com)

Tel: +33 1 46 34 19 60

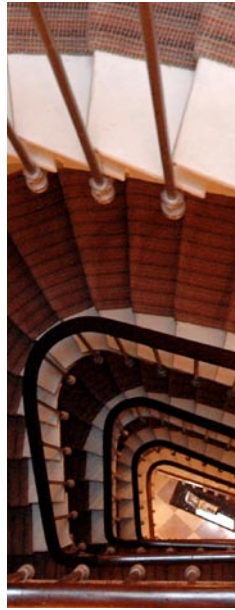
Fax: +33 1 43 26 67 32

[www.hoteldesgrandshommes.com](http://www.hoteldesgrandshommes.com)

[www.hotels-paris-rive-gauche.com](http://www.hotels-paris-rive-gauche.com)

  
*Hôtels Paris Rive Gauche*

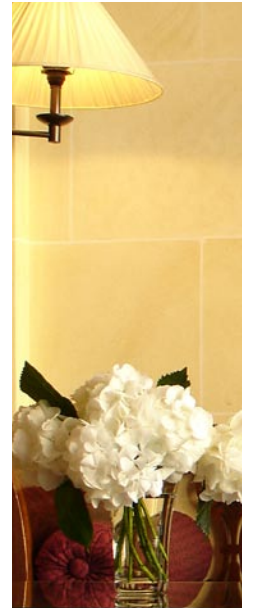
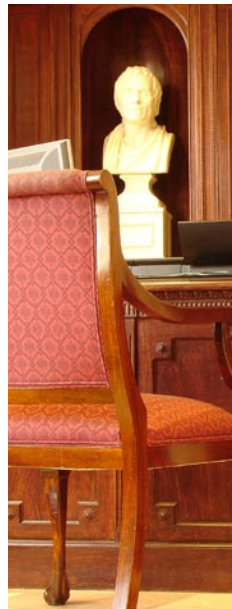
31 rooms, seminar's room



## HÔTEL DES GRANDS HOMMES

**In a beautiful 18<sup>th</sup> century building opposite the Pantheon, one minute away from the Luxembourg Gardens and the Sorbonne, the Hotel des Grand Hommes is steeped in history. Andre Breton, father-figure of the surrealism movement lived there and wrote "les champs magnétiques" surrealism's manifesto.**

The Empire-style decor was renovated in 2002; warm colours, luxurious furniture and a special attention to every detail. Sleeping opposite the Pantheon, perhaps you will dream of famous French figures such as Alexandre Dumas, Pierre et Marie Curie, Emile Zola, Victor Hugo, André Malraux, Gambetta, and Jean Jaurès. By choosing one of our deluxe rooms, you will have the pleasure of taking breakfast on your own private terrace with exquisite views. The Luxembourg Gardens are perfect for a daytime stroll, and the ambiance of St. Germain by night is simply unique. Take a direct train from either of Paris' airports, and you will be at the Hotel des Grands Hommes in just 30 minutes. All the rooms have air conditioning. The whole team will have the pleasure of your company at the hotel, making every effort to ensure your stay is not only pleasurable but unforgettable.



Rive Gauche

**Car park :**  
Soufflot public car park

**Metro :**  
Cluny Sorbonne or  
Cardinal lemoine (10),  
Saint Michel (4),  
Luxembourg (RER B)

**Bus :**  
21, 24, 27,38, 63, 87, 86, 89

**Train stations:**  
Gare Montparnasse  
Gare Austerlitz

**Airports:**  
Roissy CDG,  
Orly

Direct access by RER B  
station Saint Michel

**Nearby:**  
Musée de Cluny,  
Musée d'Orsay,  
Musée du Louvre,  
Musée du Luxembourg,  
Cathédrale Notre-Dame,  
La Sainte Chapelle,  
Église Saint-Séverin,  
Quartier latin,  
Saint-Germain-des-Prés,  
Jardins du Luxembourg,  
Panthéon,  
Sorbonne,  
Institut du Monde Arabe,  
Île de la Cité



**Wi Fi :** Free Wi Fi Internet connection in the lobby

